

Pedestrian Bridge on the River Rioni

Aslan Dzhandzhgava LLC Engineerius

Location: Kutaisi, Georgia
 Timeline: January 2020 – March 2020
 Website: www.engineerius.ge

Project Description

The construction site of a new pedestrian bridge on the Rioni River in the city of Kutaisi is located in the old, historical part of the city. The creation of a new bridge required a comprehensive analysis of the construction site. The site was investigated from a technical point of view, as well as from socio-economic, historical, architectural, and environmental aspects. As part of the study, the following types of work were carried out: (1) inspection of the construction site with the client (Kutaisi City Administration); (2) study and analysis of the construction site from a socio-economic point of view; (3) using drones in RTK mode, creating aerial photography of the construction site; (4) geodetic work, using high-precision geodetic tools, creating a topographic map of the area and creating a digital terrain model; (5) cadastral analysis done

according to the official cadastral databases and a study/analysis of land owners at the construction site; (6) geological surveys and laboratory research; (7) hydrological surveys and calculations; (8) using drones and professional photographic equipment panoramic photos were taken; (9) Historical and architectural analysis of the construction site and adjacent areas of the city; (10) archaeological assessment of the construction site; (11) environmental assessment of the construction site. An integrated approach to the study of the construction site is especially important for the effective implementation of infrastructure projects in cities. This approach helped us not only to assess the current situation, but also to foresee the development of the territory in the future and take these forecasts into account in the present.



PROPOSAL SITE PLAN



[1] Left embankment, St. George courtyard

[2] Rioni riverbed, view from left embankment

[3] Rioni riverbed, view from right embankment

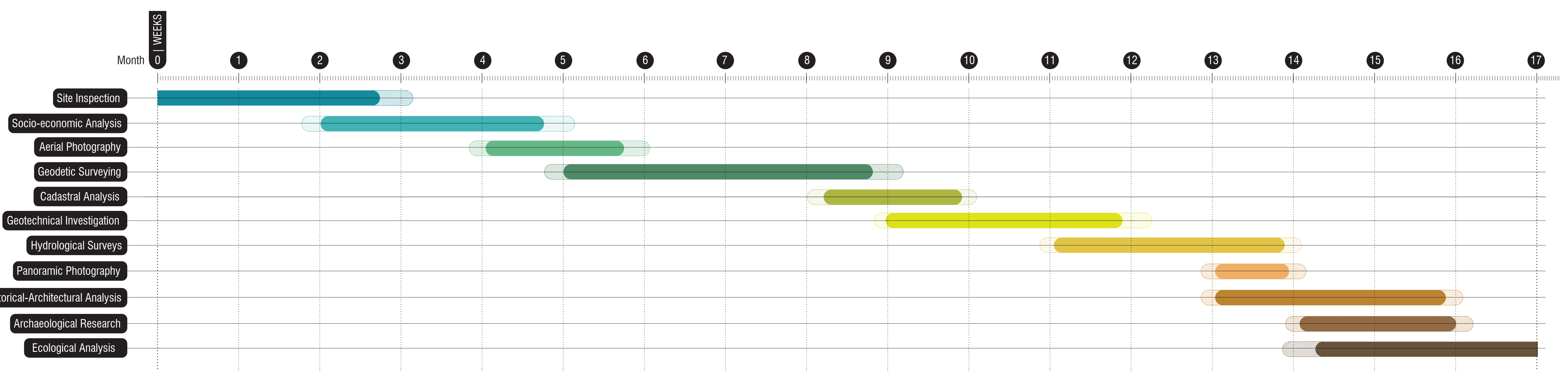
[4] Rioni riverbed, view upstream

[5] Rioni river, view from left embankment

[6] Project territory, view from botanical garden



SITE SURVEYING AND PHOTOGRAPHY



PROJECT TIMELINE