

Socio-Spatial Georgia

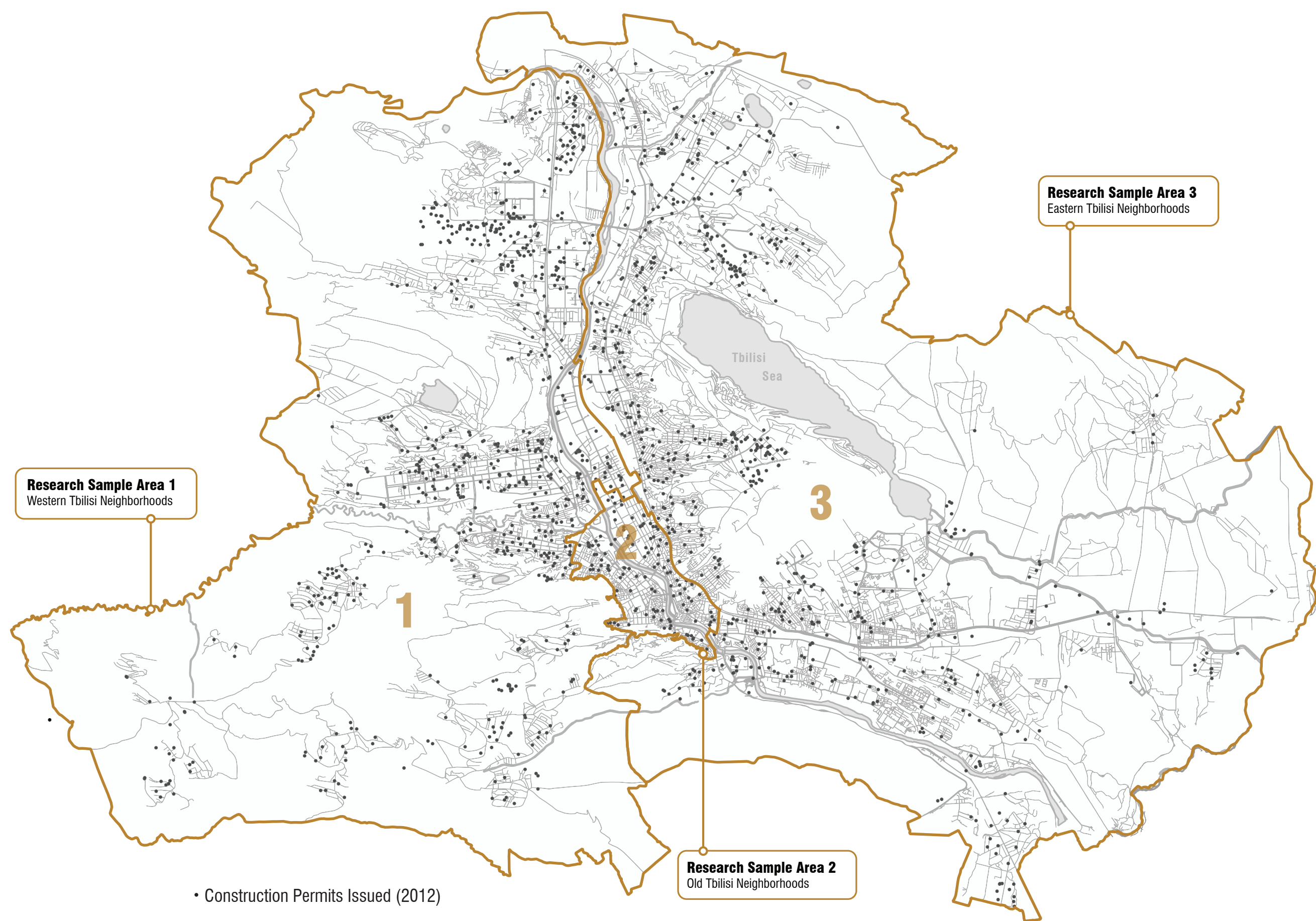
Suzanne Harris-Brandts / David Sichinava / David Gogishvili Collective Domain

Location: Tbilisi & Batumi, Georgia
 Timeline: March 2019 - March 2021
 Website: www.sociospatial.ge; www.kolektiuri.com

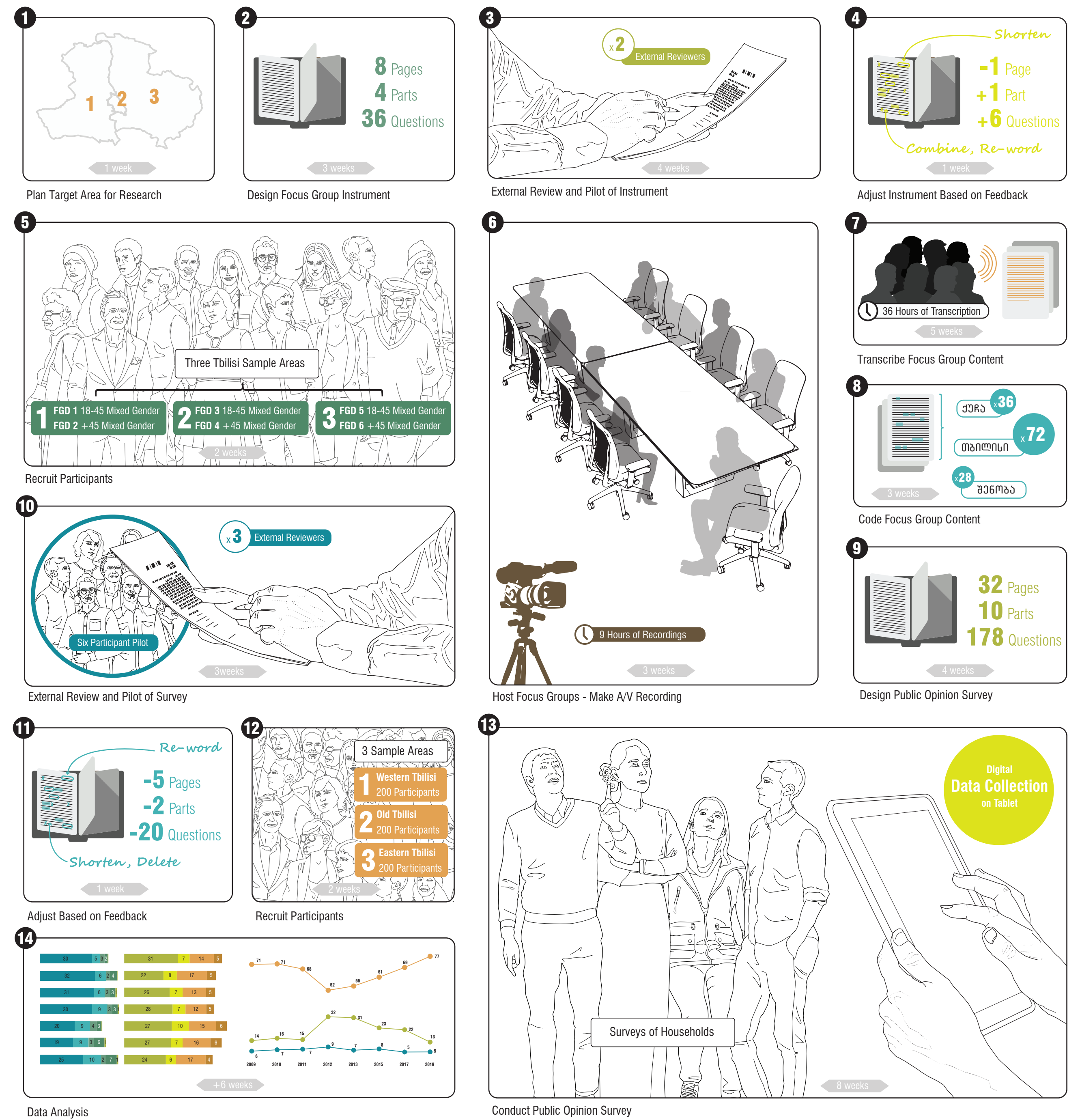
Project Description

Socio-Spatial Georgia is a three-year design-research endeavor led by *Collective Domain*. Over the past fifteen years, Batumi and Tbilisi, Georgia's two largest cities, have experienced overwhelming urban change in the form of building demolitions, extensive renovations, and new construction. A significant portion of the latter has been two types of private-sector urban development: large, iconic flagship projects and medium-large residential infill projects. These projects have changed the landscapes of Batumi and Tbilisi by increasing neighborhood densities, introducing new architectural design aesthetics, shifting existing socio-economic structures, overturning existing regulatory restrictions, and at times changing programmatic uses.

Socio-Spatial Georgia aims to better understand the deeper societal implications of these forms of large development at a time when the country continues to rely heavily on such projects to boost the economy. Methodologically, the project is innovative for its use of mixed-methods data collection, including civilian opinions, neighborhood characteristics, and building vacancies. For the purposes of this research, "social impacts" are measured through a mix of qualitative and quantitative measures: demographic statistics (informing population restructuring); building vacancy data (informing built environment and inhabitation changes); and residents' opinions (informing the population's understanding of these changes).



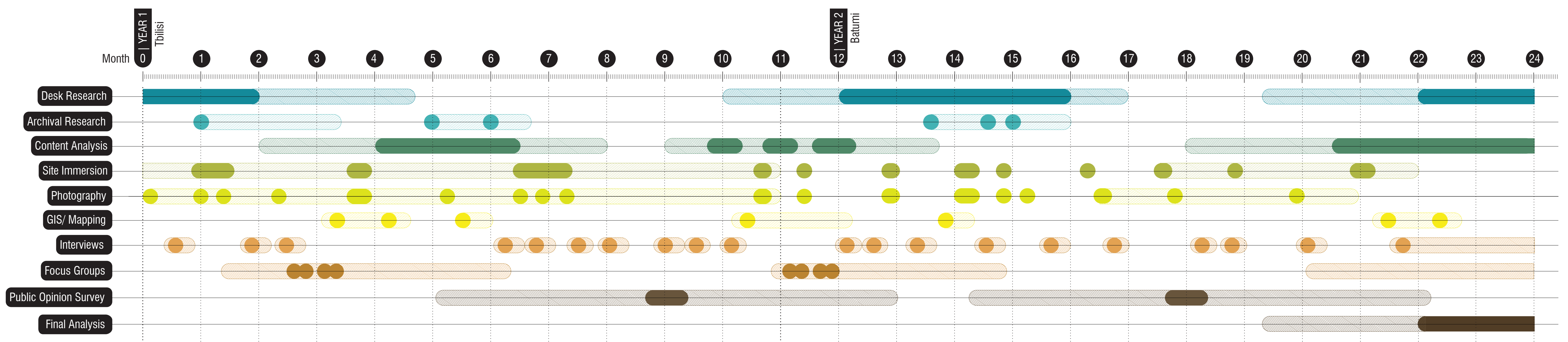
ISSUED CONSTRUCTION PERMITS (TBILISI, 2012)



PLANNING FOCUS GROUPS AND A CITY-WIDE PUBLIC OPINION SURVEY (TBILISI)



SITE PHOTOGRAPHY (BATUMI)



PROJECT TIMELINE