

Crailo Neighbourhood

Tamar Tsanova / Martijn Eefting

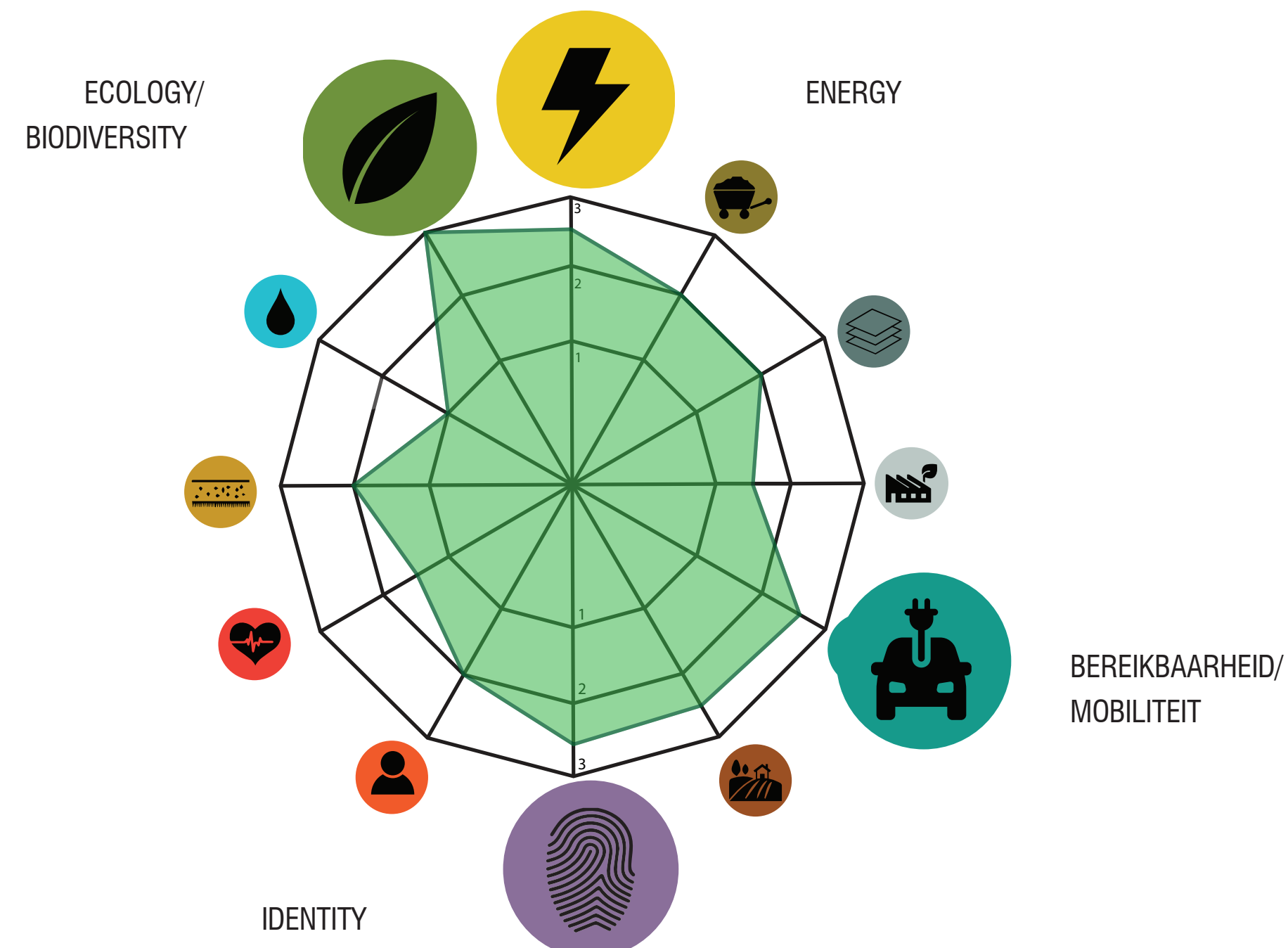
SVP Architecture and Urban Planning

Location: Crailo, The Netherlands
Timeline: May 2018 – December 2019
Website: www.svp-svp.nl

Project Description

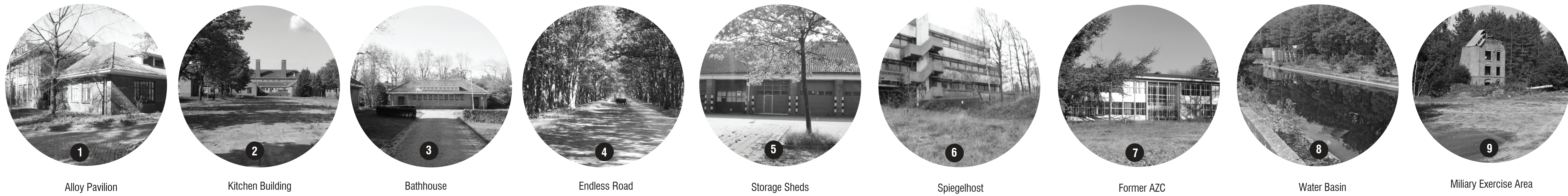
Crailo, situated between Hilversum, Bussum and Laren, will move towards a special future as an energy positive hamlet. It will contain not only dwellings, but also new working spaces and new nature. SVP developed as team C a new masterplan together with OKRA landscape architects, Arcadis and Bureau for Area Communication. With the assistance of the "wheel of Crailo", which shows the relations between the core values,

team C chose together with stakeholders and sustainability specialists for a focus on identity, biodiversity, mobility and energy. Plan has been realized in dec 2019 via intensive conversation with a workgroup, sustainability sessions with involved specialists and in continuous consultation with the neighbors and stakeholders.

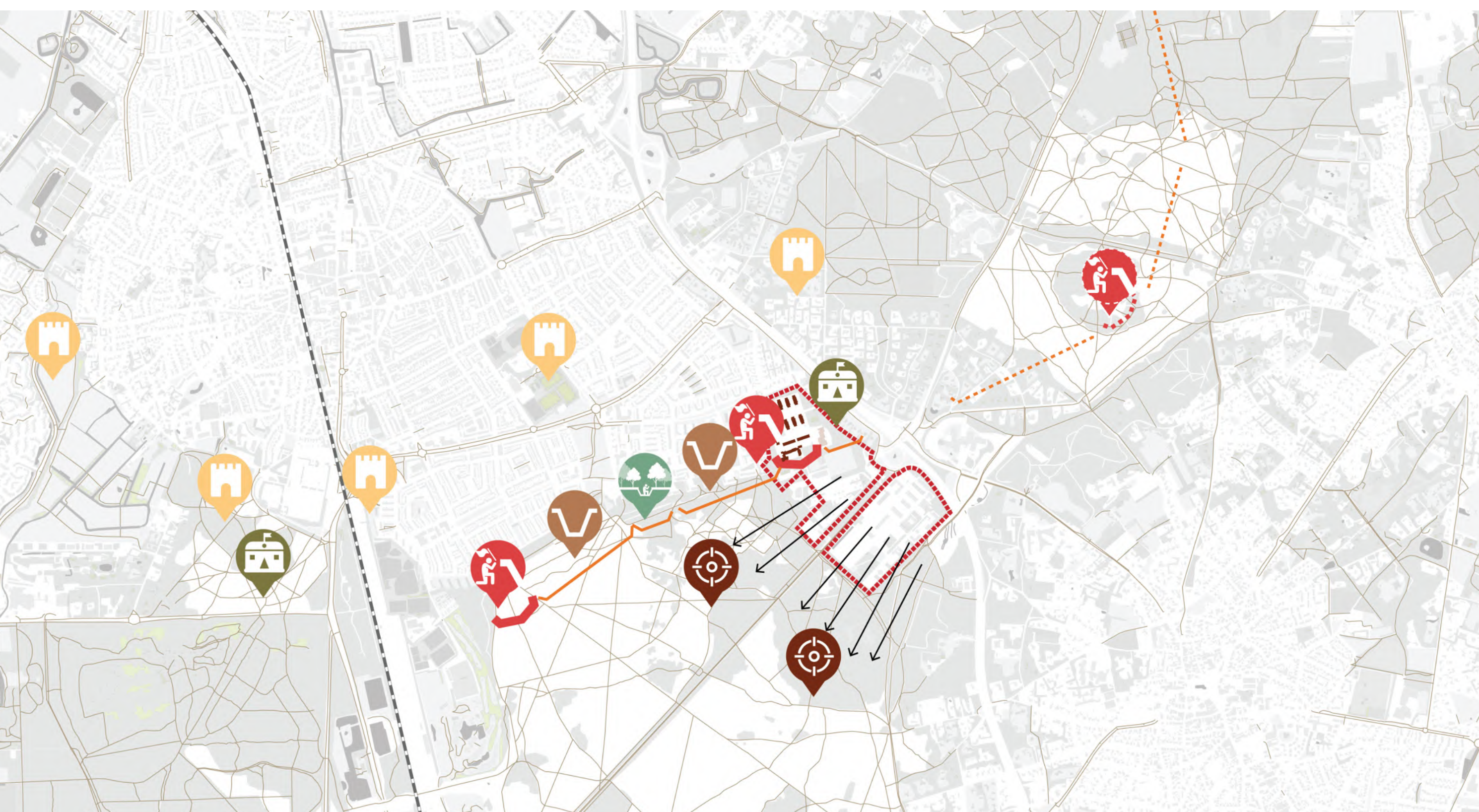


ANALYSING AMBITION DOCUMENT & SUSTAINABILITY APPROACH | FOCUS AREAS

PROJECT SITE PLAN



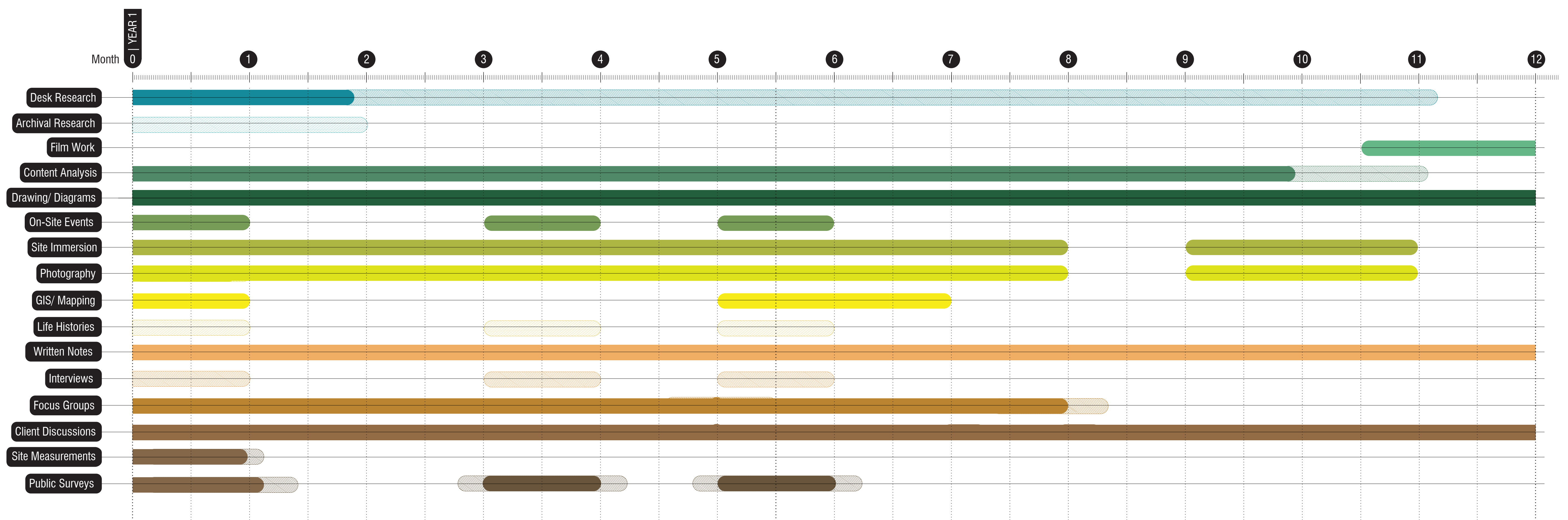
SITE VISITS & PHOTOGRAPHY



ARCHIVE RESEARCH | HISTORY

Camp Fort Sconce Trenches Shooting ranges Hobbeltjebos (trenches)

FOCUS GROUPS, INTERVIEWS, ON-SITE EVENTS



PROJECT TIMELINE